

Social Care



save our services

This year, all service areas must be considered as Councils look to address pressures of **£1bn** – that’s the impact if Scottish Government does not change its current spending plans

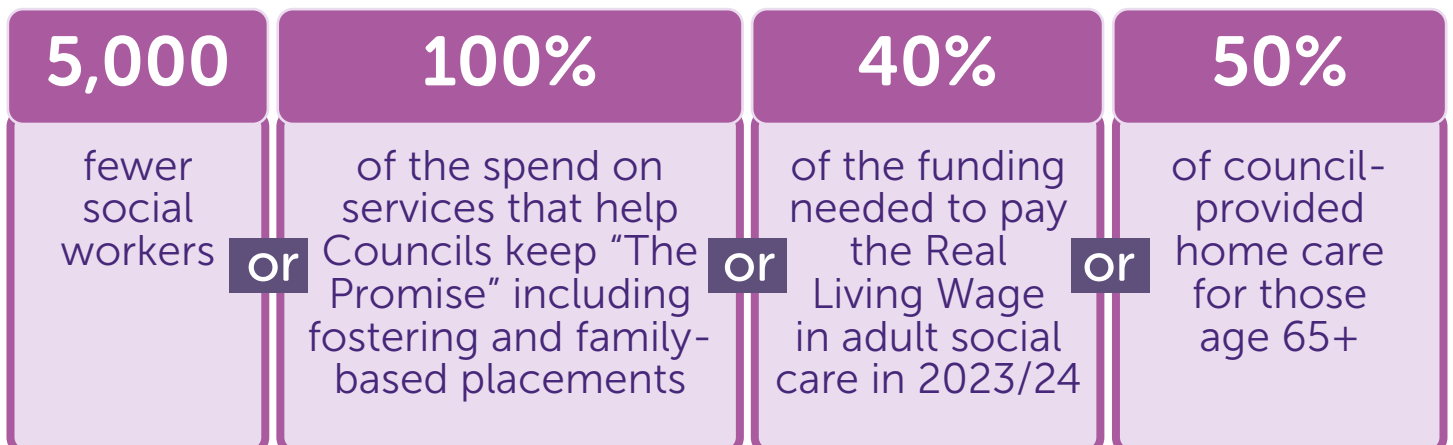
Emergency action needed as care homes ‘on brink of collapse’ says council

£18m savings needed to fill budget gap as demand for care increases

These are just 2 examples reported recently of the decisions that Councils across Scotland are having to consider in areas like social care and social work - areas that have remained relatively protected until now.

Councils spend around **£4.3bn** on social care and social work services (around 30% of all net revenue expenditure). That’s money directly supporting the care and protection of children and adults.

If current spending plans don’t change and social care and social work services take their ‘fair share’ of the financial pressures for 2023/24, they could have to find savings of around **£300m** – that equates to:



Clearly, Councils will take locally appropriate decisions in an attempt to minimise the impacts across all services and protect the most vulnerable, but this will be challenging.

“ Money invested in social care and social work not only keeps vulnerable adults and children safe, but it keeps people out of hospital – as pressures mount over winter, this becomes even more important. Over recent years, councils have protected areas like care by cutting other services – roads, libraries, street cleansing, parks - but the scale of the financial pressures this year mean that everything will need to be considered. ”

Councillor Paul Kelly,
COSLA's Health and Social Care Spokesperson

The impacts of this year's cuts will mean:



Risks to the viability of care services
provided by councils and others



Care home closures,
with knock-on impacts on delays at hospitals



Poorer health and wellbeing,
especially amongst older people



Exacerbating current challenges in
recruiting and retaining staff

Despite the pressures facing social care and social work, the Scottish Government is pressing ahead with plans to divert any extra investment for the sector towards the costly and disruptive structural change of a National Care Service - with no certainty that it will achieve the improvements in capacity and quality that are urgently needed.

“ We are at a crisis point like never before - the impact of the Scottish Government's current spending plans for social care is serious, and they need to be reconsidered. ”

Councillor Katie Hagmann,
COSLA's Resources Spokesperson



Your local MSP has a key role to play to support Local Government during the budget process – please feel free to contact them to highlight the essential services your council delivers and the need for the Scottish Government to provide Councils with a fair settlement.

info@cosla.gov.uk
www.cosla.gov.uk



@COSLA
facebook.com/CofSLA