

# COSLA Leaders Update

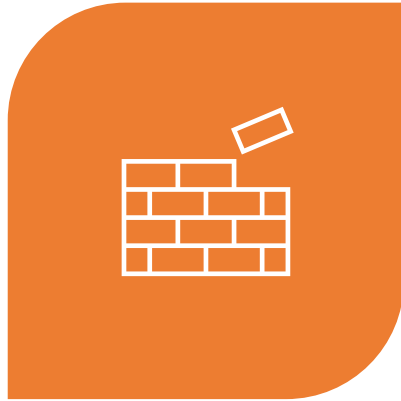
---

March 2022



**LEARNING ESTATE**  
INVESTMENT PROGRAMME  
Connecting People, Places & Learning

# Progress To Date



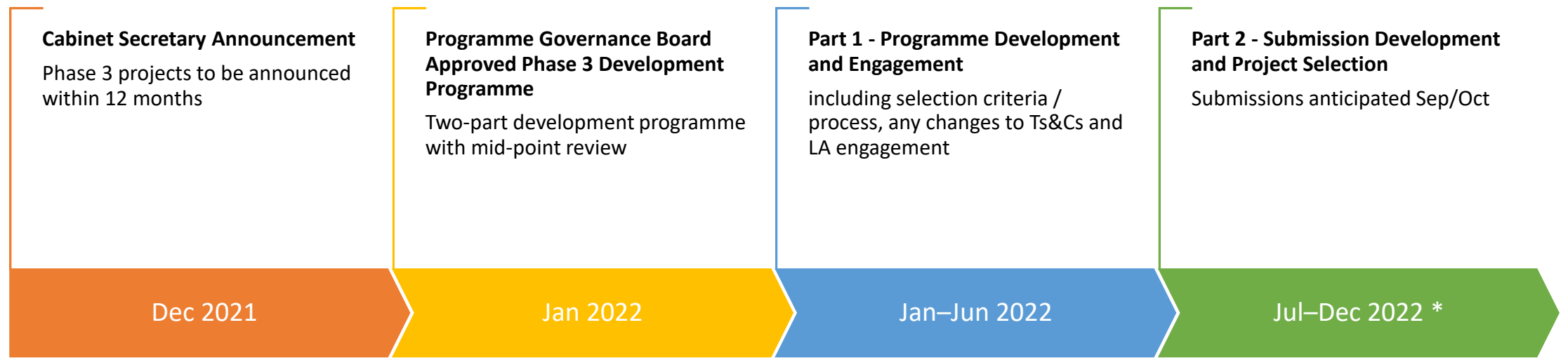
4 PROJECTS ON SITE  
21/22



16 PROJECTS DUE TO  
START ON SITE 22/23



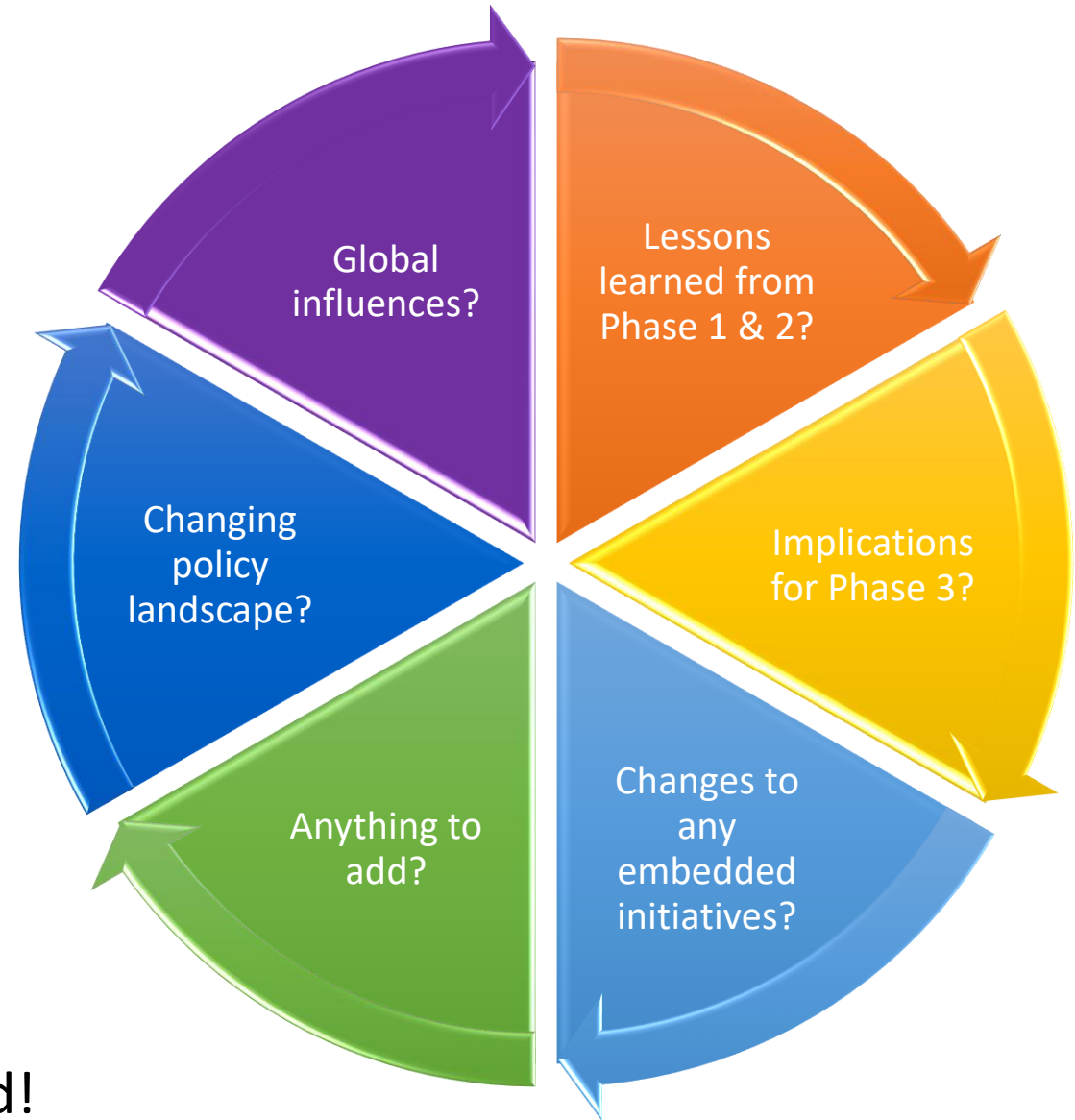
1ST PROJECT TO OPEN  
22/23



\* Timeline for Part 2 subject to review at June Programme Governance Board – desire to accelerate where possible

# Phase 3 Development Programme

# Key Questions for Part 1



Your feedback is warmly welcomed!

# Specific Areas of Focus

- Embodied Carbon / Zero Emissions Heat
- Supply Chain Challenges
- Inflation and Risk
- Metrics (both Area and Cost)

# Getting Ready...

Investment Priority(s)

Consider of 'Place'

Vision, Strategic Outcomes and Objectives

Learning Estate Strategy 2019 Guiding Principles

Political and Financial Commitment

Demonstrating Implementation of Ts&C's on Phase 1&2 Projects



**LEARNING ESTATE**  
INVESTMENT PROGRAMME  
Connecting People, Places & Learning

# Key Contacts

Andy Dailly – Head of School Building – SG

07500 122 111

[andrew.dailly@gov.scot](mailto:andrew.dailly@gov.scot)

Gemma Boggs – Senior Associate Director – SFT

07540 707 250

[gemma.boggs@scottishfuturetrust.org.uk](mailto:gemma.boggs@scottishfuturetrust.org.uk)

Stephen Long – Associate Director – SFT

07526 166 731

[stephen.long@scottishfuturetrust.org.uk](mailto:stephen.long@scottishfuturetrust.org.uk)